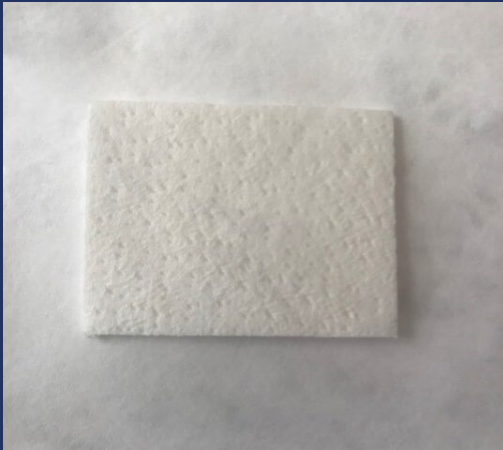




ACELLULAR DERMAL MATRIX
FOR SOFT TISSUE

RECONSTRUCTION



STORAGE

- Store at a maximum temperature of 25°C as indicated on the label.
- Keep away from heat sources and direct sunlight.
- Store inside the original packaging.

PRODUCT DESCRIPTION

CELLIS® Dental is a cell-free, non-pyrogenic collagen matrix (acellular dermal matrix ADM) obtained from porcine skin. CELLIS® Dental is intended for use as a surgical matrix in soft tissue repairs and serves to support, cover or replace tissue.

CELLIS® Dental comes in double sterile packaging, is supplied dry and does not contain any preservatives. This surgical matrix is a resilient, biocompatible implant, which incorporates into the host tissue through cellular and microvascular infiltration and should not require another surgical procedure due to removal.

CELLIS® BENEFITS

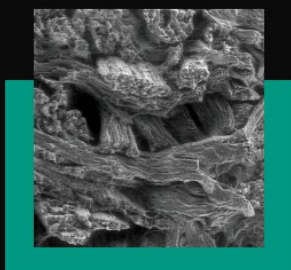


- + Quick hydration
- + Easy to handle and place

- + Freeze-dried
- + Free from preservative



**PORCINE ACELLULAR
DERMAL MATRIX FOR SOFT
TISSUE RECONSTRUCTION**



MAKING SAFE TECHNOLOGIES
AVAILABLE

REFERENCES

SIZES	REFERENCES	THICKNESSES
10 x 10 mm	NP1010E	1,4 mm
10 x 30 mm	NP1030E	1,4 mm
15 x 20 mm	NP1520E	1,4 mm
20 x 30 mm	NP2030E	1,4 mm
20 x 50 mm	NP2050E	1,4 mm
30 x 40 mm	NP3040E	1,4 mm
50 x 50 mm	NP5050E	1,4 mm

COMPOSITION

Sterile, acellular, type I & III porcine dermis derived collagen matrix.

INDICATIONS

CELLIS® Dental is a Class III medical device dedicated to dental surgery.

It is intended to be used in implantology, periodontology, stomatology & CMF (cranio-maxillo-facial surgery) for dental regeneration of soft tissue defects and development of soft tissues around teeth or implants.

Indications for use include:

- Treatment of recession defects (gingival recession)
- Soft tissue augmentation around teeth and implant

- Soft tissue grafting in combination with GBR/GTR
- Covering/sealing of extraction sockets

CONTRAINDICATIONS

The matrix should not be used on patient less than eighteen years old.

There has neither been any testing on the use of the matrix during pregnancy and breastfeeding. Matrix should not be used during pregnancy and breastfeeding.

CELLIS® Dental must not be used in patients with:

- Known hypersensitivity or allergy to porcine materials
- Acute or chronic infection or inflammation of the buccal cavity
- General illness contra-indicated for implantology, periodontology, stomatology, cranio-maxillo-facial surgery

Brochure is intended for healthcare professionals only.
The « Instructions for Use » attached to the packaging should be read carefully.
Visit www.meccellis.com
and contact your sales representative for more information.



MECCELLIS BIOTECH

75, rue de Québec
17000 La Rochelle
FRANCE

Ph. : +33 (0)5 17 81 07 63
contact@meccellis.com
www.meccellis.com



Brochure reference: TF_02_013
Version V03 - 31/12/2024